



687-693, London Road
Westcliff-On-Sea, SS0 9PA
£1,150 PCM



687-693, London Road

Westcliff-On-Sea, SS0 9PA

Nestled in the heart of Westcliff-On-Sea, this charming first-floor flat at The Reach, London Road offers a perfect blend of comfort and convenience. Available from the 28th of July, this fully furnished one-bedroom apartment is ideal for individuals or couples seeking a stylish living space.

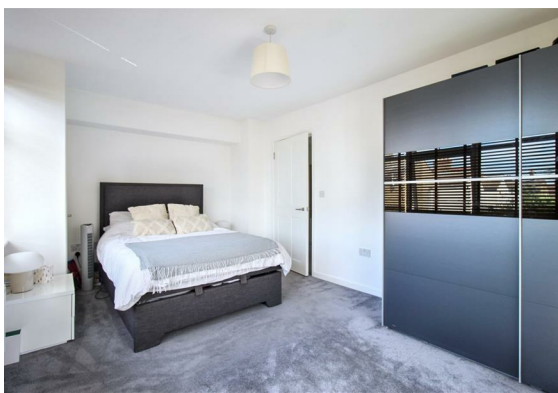
Upon entering, you are welcomed into a spacious lounge that seamlessly integrates with a modern kitchen, creating an inviting atmosphere for both relaxation and entertaining. The kitchen is equipped with all integrated appliances, ensuring that you have everything you need at your fingertips. The generous 16-foot master bedroom provides ample space for rest and relaxation, while the contemporary family bathroom adds a touch of luxury to your daily routine.

One of the standout features of this property is the allocated parking space, a rare find in such a desirable location. With easy access to local amenities and transport links, you will find yourself perfectly positioned to enjoy all that Westcliff-On-Sea has to offer.

This flat is fully furnished and turn key ready, offering a seamless and stress-free transition. Don't miss the chance to make this charming home your own

Entrance Hallway

Lounge/Kitchen
16'0 x 14'0 (4.88m x 4.27m)

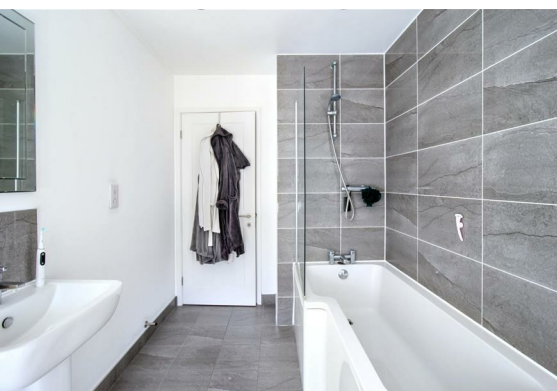
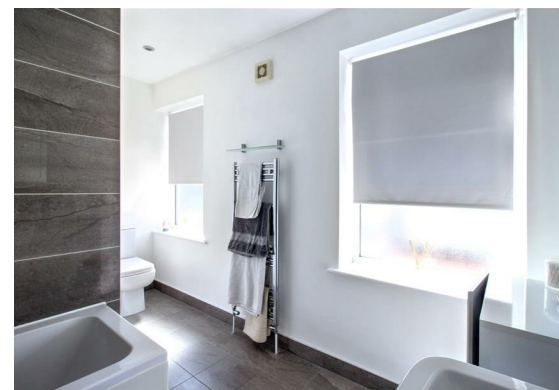




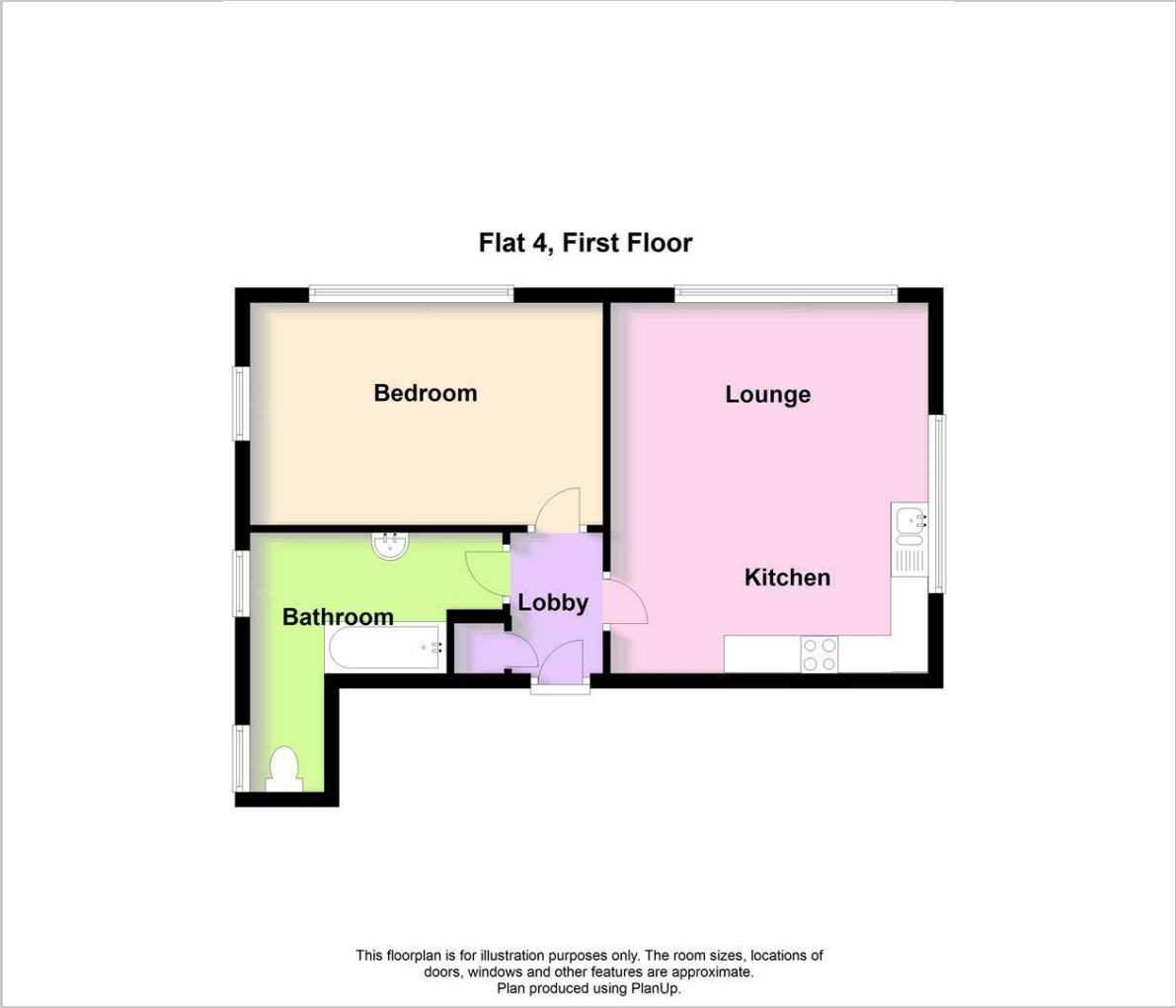
Master Bedroom
16'0 x 10'0 (4.88m x 3.05m)

Bathroom
11'0 x 10'0 (3.35m x 3.05m)

One Allocated Parking Space



Floor Plan



Viewing

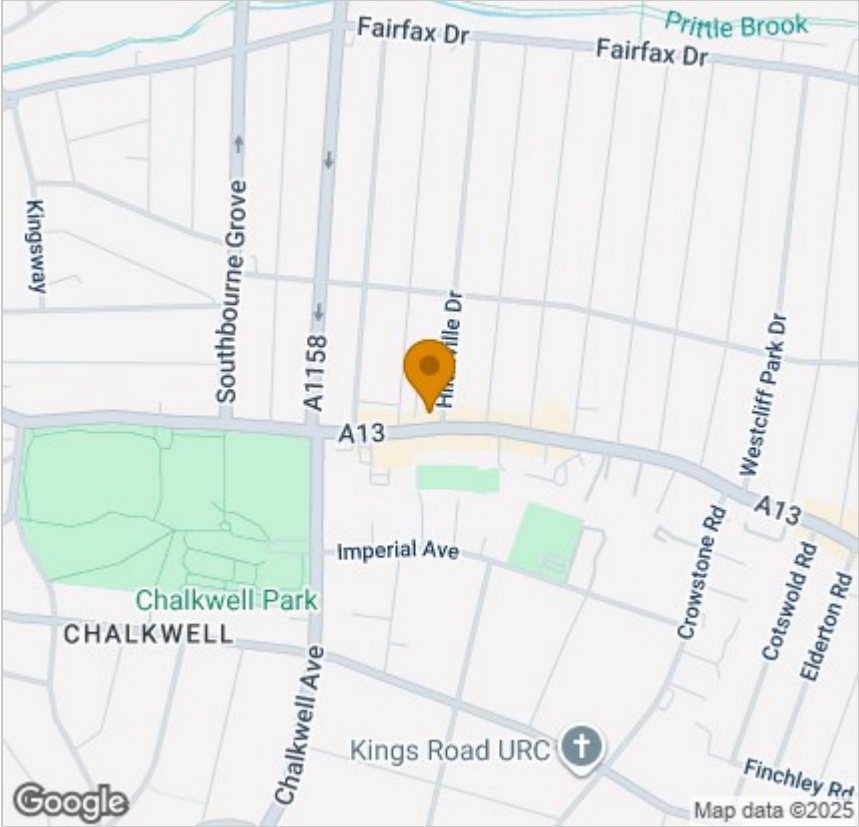
Please contact our Sales & Lettings Office on 01702710555 if you wish to arrange a viewing appointment for this property or require further information.

These particulars, whilst believed to be accurate are set out as a general outline only for guidance and do not constitute any part of an offer or contract. Intending purchasers should not rely on them as statements of representation of fact, but must satisfy themselves by inspection or otherwise as to their accuracy. No person in this firm's employment has the authority to make or give any representation or warranty in respect of the property.



34 Broadway, Leigh-on-Sea, Essex, SS9 1AJ
Tel: 01702710555 Email: info@turnerestates.co.uk www.turnerestates.co.uk

Area Map



Energy Efficiency Graph

